

Customer :

customer

Customer part :

customer part

Comment :

Comment

S1=1.28

S2=1.81

Tmax=453

Tp S2=492.0

PI=0.41

HI=114

Sample =1661.60

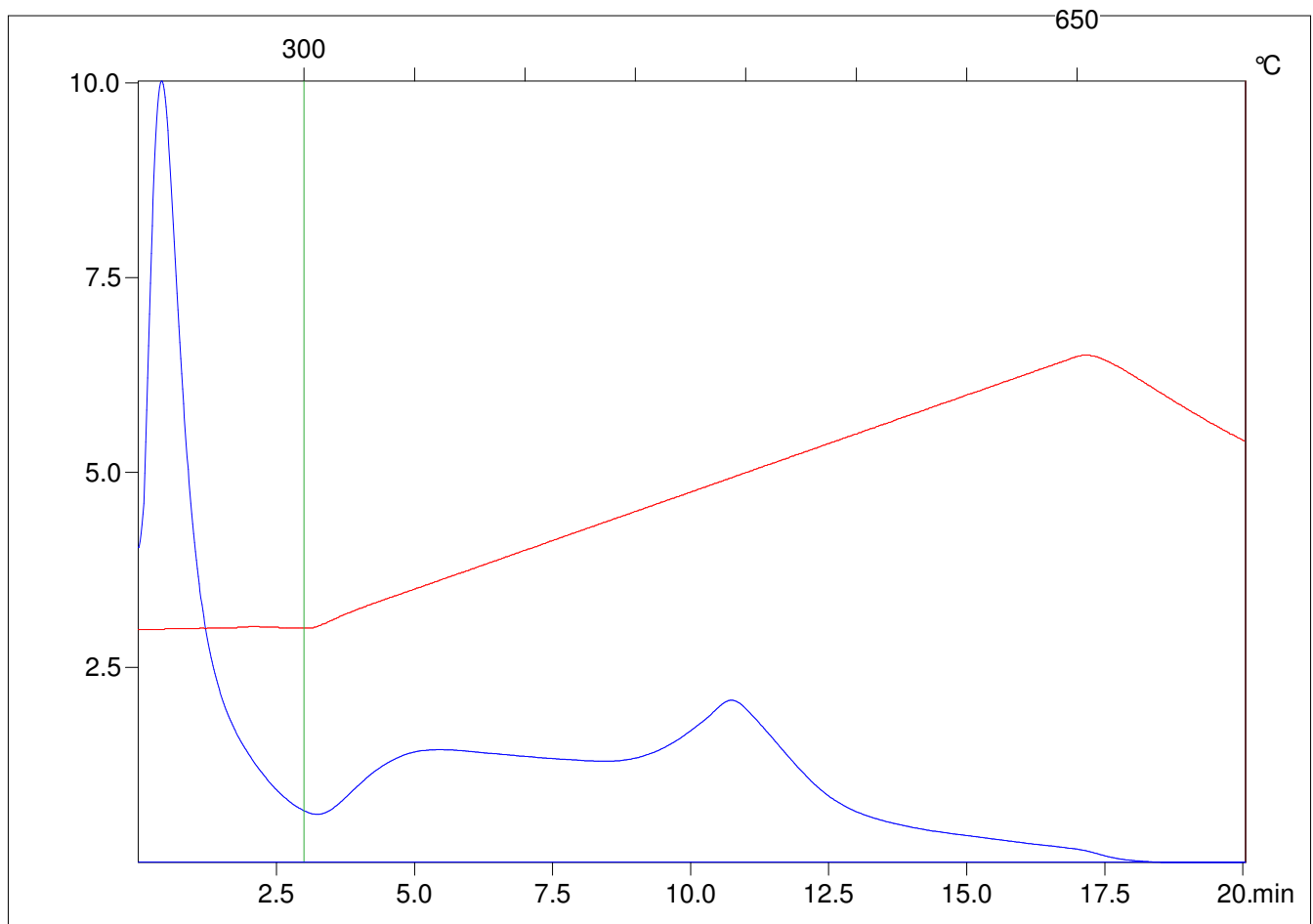
Method =Bulk Rock

Cycle=Basic

KFID(10*9)=1444

Qty =70.8

TOC=1.59



C:\VINC\PK1792\PK091.R00 : FID pyrolysis graphic

State

Pyro Status

Oxi Status